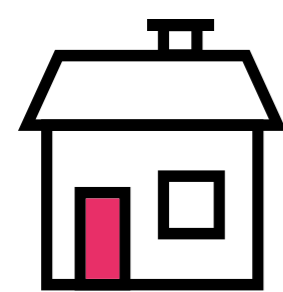
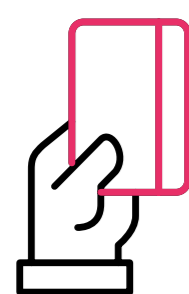


Key Benefits

Development at land off Lewes Road, Ringmer, will deliver a host of key benefits, which will include:



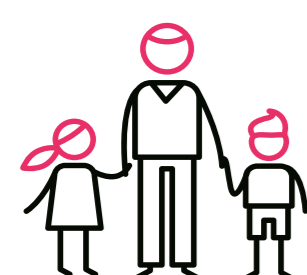
The provision of up to 100 much-needed high-quality new homes



The delivery of 40% affordable housing



Helping Lewes District Council to meet its housing targets



New community facilities, which will be gifted to the Ringmer Sport & Recreation Trust to manage in perpetuity, for the benefit of the whole of Ringmer, comprising:

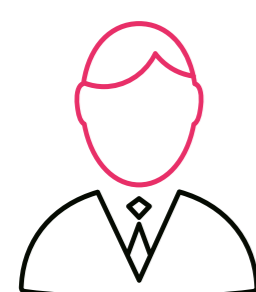
- A new junior skate park
- An equipped play area
- A 3G football pitch
- Tennis courts
- Cricket nets
- Outdoor gym equipment



Creating new public open green spaces for all to enjoy



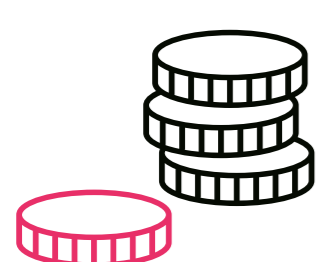
Protecting existing habitats and creating new ones, including the retention and enhancement of existing trees and hedgerows on-site



Creating local jobs during the construction phase



Investing in the local economy, aiding the recovery from the pandemic



Financial contributions towards the improvement of education and infrastructure

Next steps

Thank you for viewing our exhibition regarding potential development at land south of Lewes Road, Ringmer, East Sussex.

Once this consultation closes on **3rd November 2021**, Croudace's project team will go through the feedback received from residents and other important local stakeholders and take this into consideration before refining our plans and taking them to the next stage.

If you provide us with your details, you will be kept up to date on our progress as the proposals for the site move forward.

Thank you for your time.

Feedback

Please ensure that you leave feedback by midnight on **3rd November 2021**. You can do this by:

- Submitting the virtual feedback form on our project website
- Emailing our project team via **feedback@consultation-online.co.uk** with comments or questions
- Calling our freephone information line on **0800 298 7040** and leaving a message, and a member of our team will call you back

For those without internet access

If you have requested to receive these consultation materials by post and you are viewing these exhibition boards in paper format, please return your comments on the feedback form provided and by using the enclosed freepost envelope.

